



Profiling floats

PROVOR CTS5 – Graphical Interface

A new generation of float

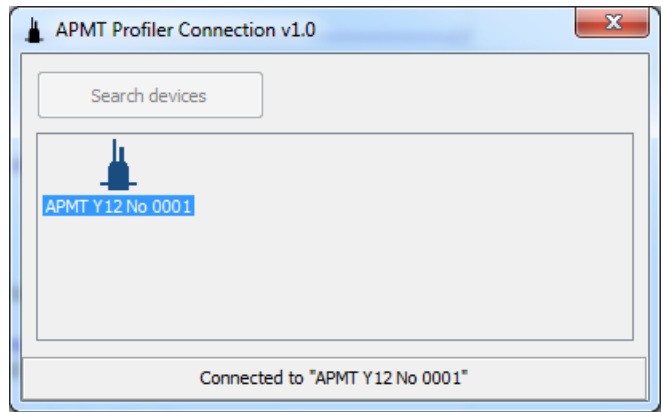


Christophe SCHAEFFER



Graphical interface features

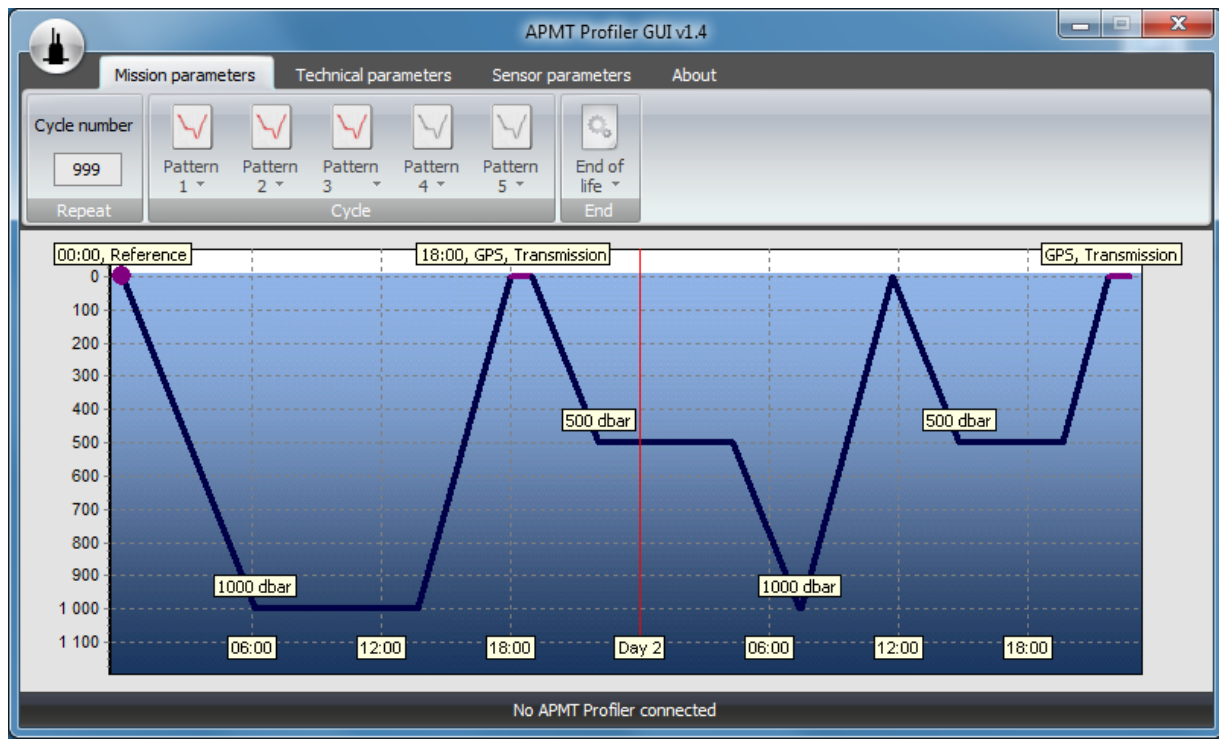
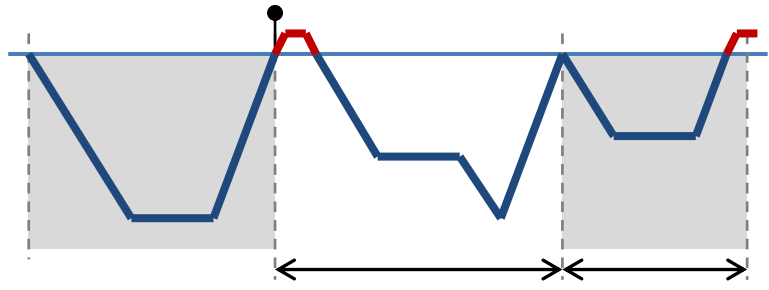
- With local files (offline):
 - Set/change navigation and sensors settings
 - Estimate data size and lifetime
 - Check a configuration
 - Generate remote command file
- Connected to the float:
 - Change its configuration
 - Make a diagnosis





Navigation parameters

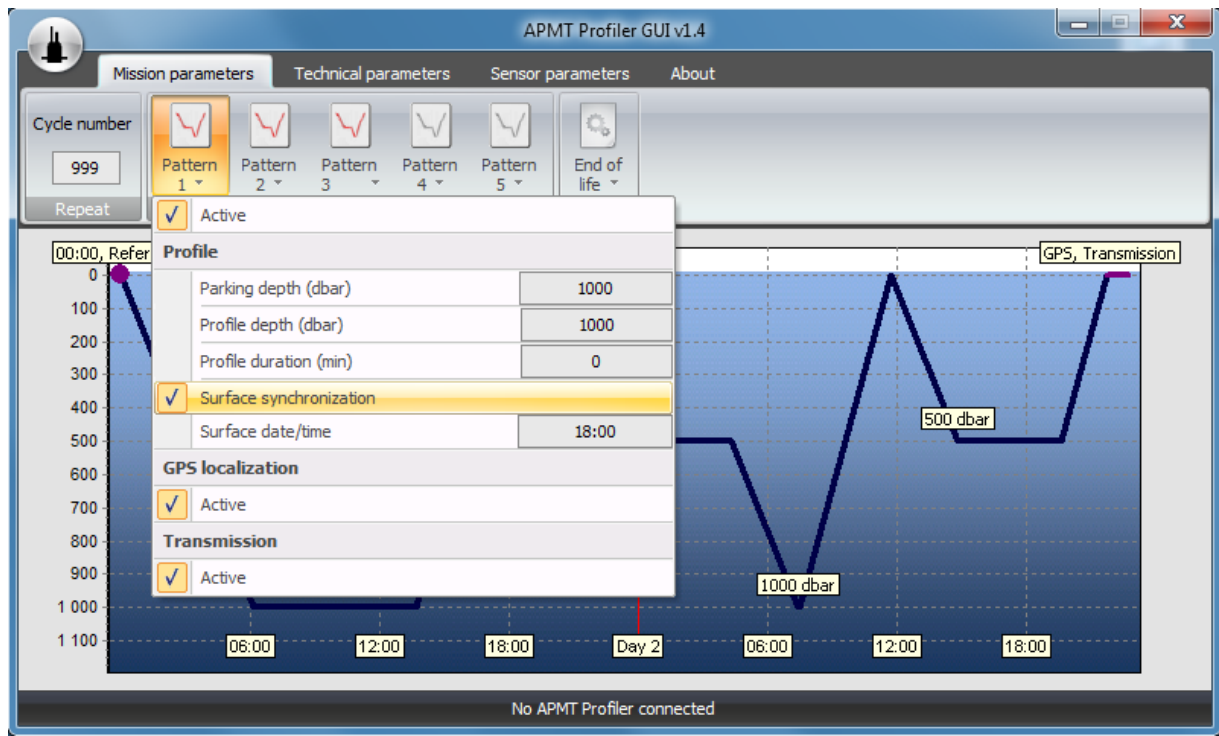
- Graphic representation:
 - Cycle/patterns
 - Depths
 - Time (synchronization, duration)





Navigation parameters

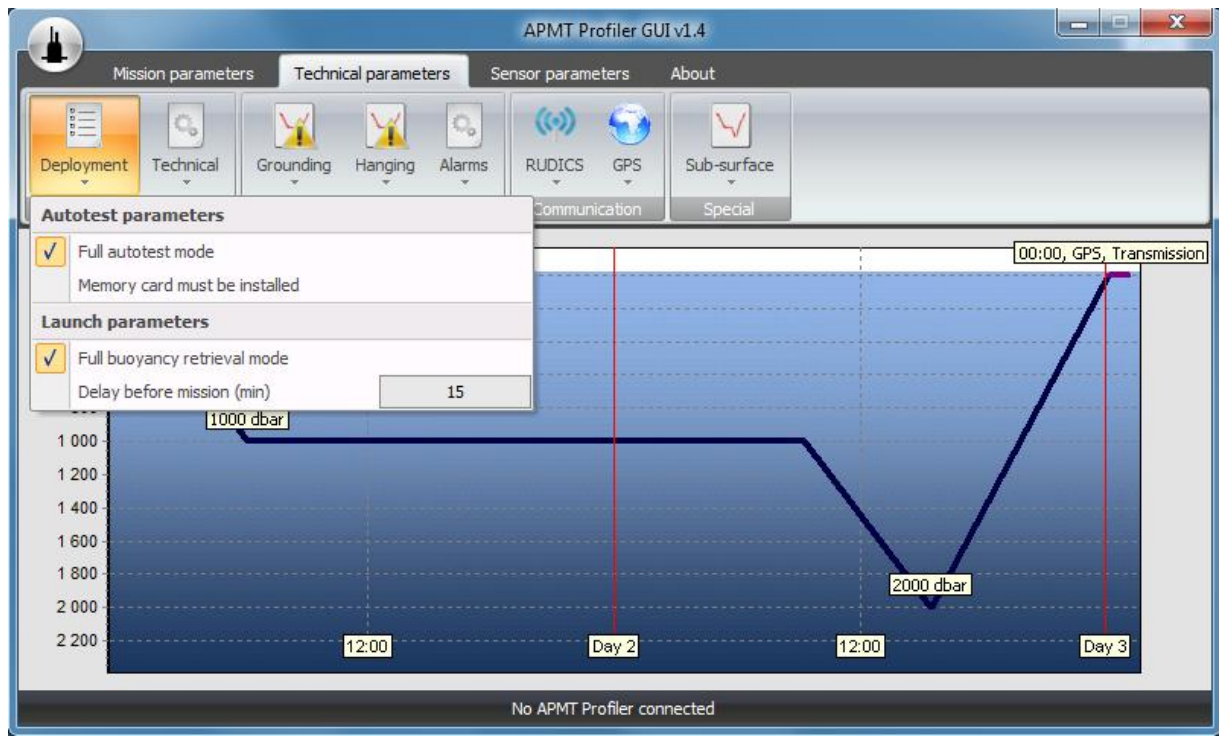
- Set/change navigation parameters:
 - Enable/disable patterns
 - Profile settings
 - Surface session





Technical parameters

- Set/change technical parameters:
 - Deployment mode
 - Security strategies
 - ...





Sensor parameters

- Set/change acquisition parameters:
 - Power mode
 - Sampling period
 - Processing type

The screenshot shows the APMT Profiler GUI with the 'Sensor parameters' tab selected. A 'Zone limits' dialog box is open, showing the following settings:

Zone	Separation (dbar)
Zone 1-2	1
Zone 2-3	10
Zone 3-4	300
Zone 4-5	1000

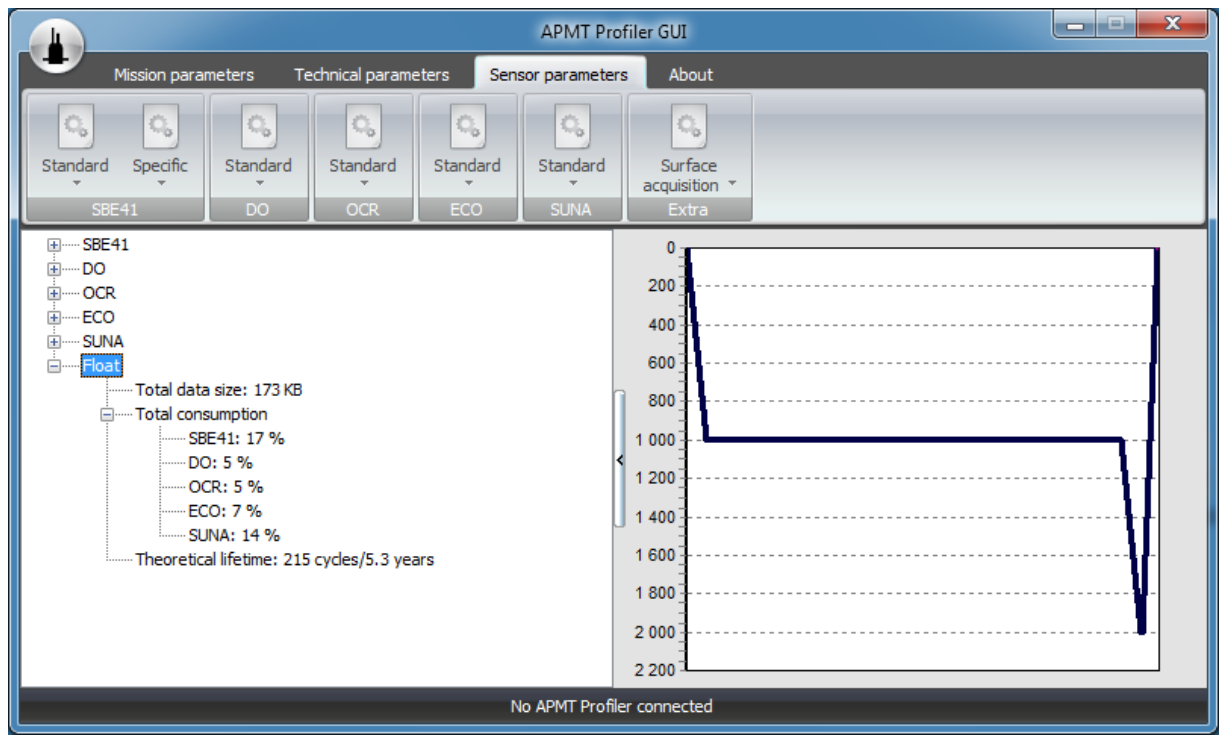
Below the dialog box, the 'Zone parameters' section lists Zone 1 through Zone 5 with expandable arrows. The background shows a depth profile graph with a green area and a blue line. Labels on the graph include 'Continuous - Arithmetic mean (1.0 dbar)', 'Continuous - Arithmetic mean (2.0 dbar)', 'Continuous - Arithmetic mean (10.0 dbar)', and 'Continuous - Arithmetic mean (50.0 dbar)'. The y-axis is labeled with 2000 and 2200. A 'Logarithmic scale' checkbox is visible at the bottom right of the graph area.

No APMT Profiler connected



Estimate configuration impact

- Estimate data size generated per sensor/per profile
- Estimate lifetime of the float

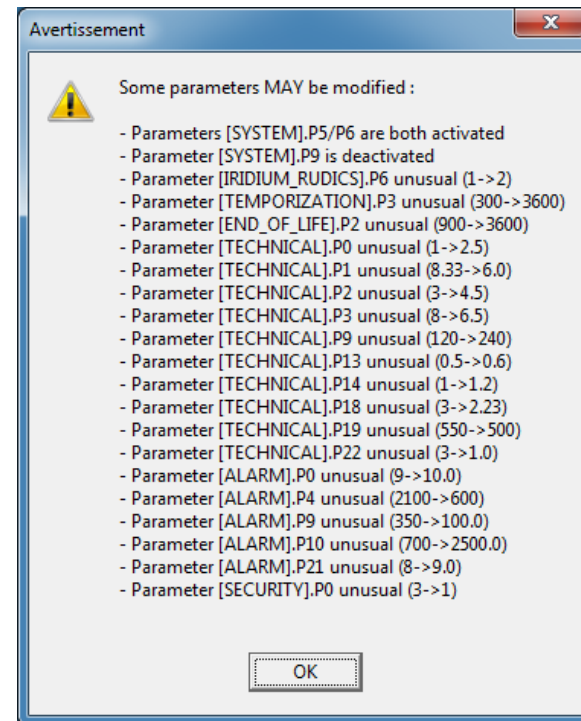
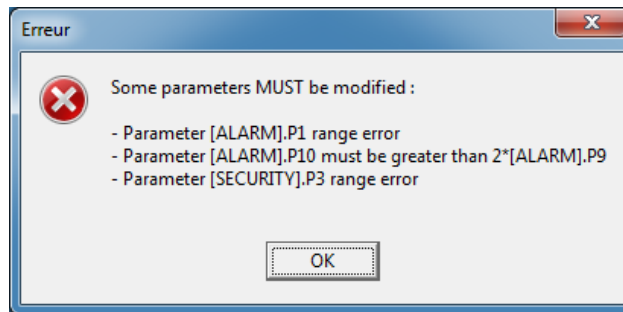




Check a configuration

➤ Configuration check results:

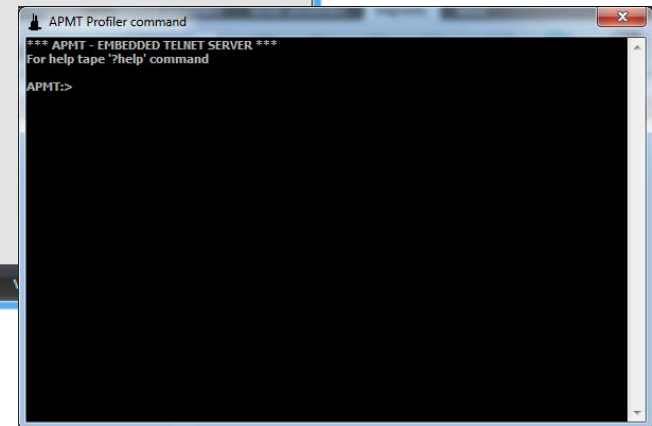
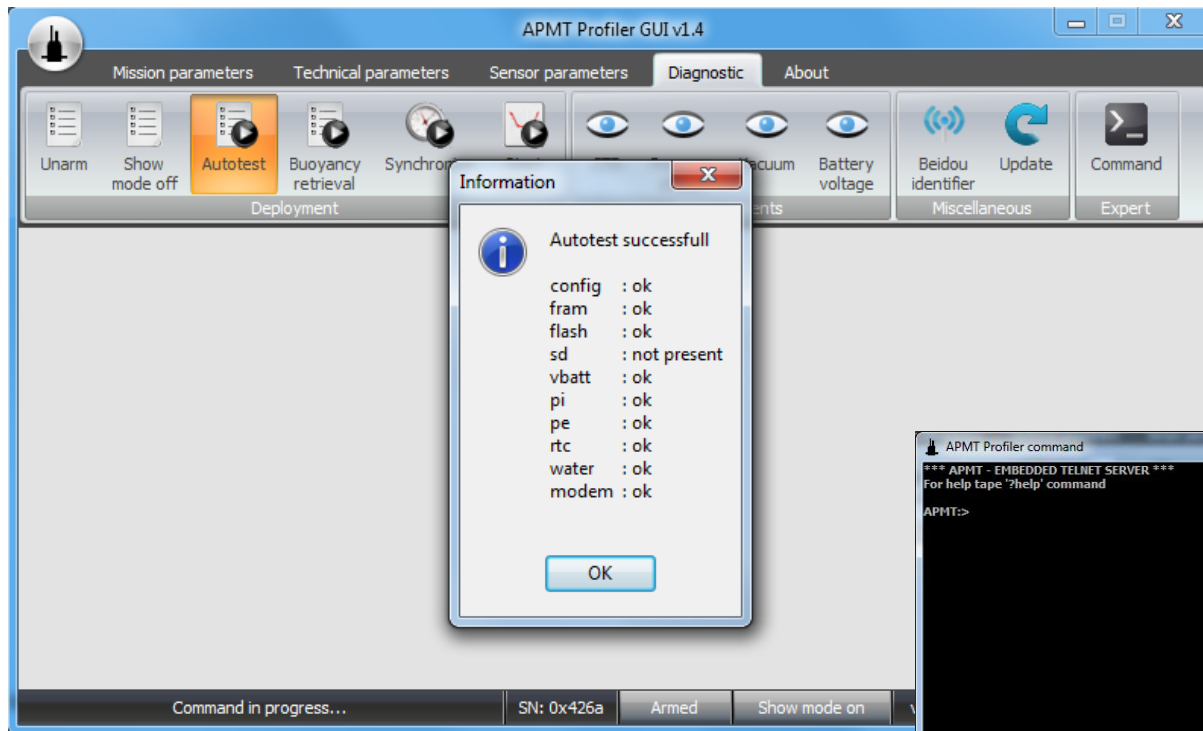
- What **MUST** be modified because of non-valid settings
- What **MAY** be modified because of non-standard settings





Make the diagnosis of a float

- Execute basic commands
- Use command interpreter for specific actions





Change configuration remotely

- Generate a listing of changes detected and remotely modifiable
- Generate a remote command file

The screenshot displays the APMT Profiler GUI. The main window features a sidebar with navigation options: Local files (Open configuration, Save configuration), Distant files (Generate remote commands), Profiler (Read configuration, Apply configuration), and Fast connect (APMT Y12 No 0001). The central area shows a graph of pressure (dbar) over time. The pressure starts at 2000 dbar at 12:00, drops to 1000 dbar at 18:00, and then rises to 2000 dbar at Day 2. Two 'GPS, Transmission' events are marked on the graph. A status bar at the bottom indicates 'No APMT Profiler connected'. An 'Information' dialog box is open in the foreground, displaying a list of parameter changes:

- Parameter [PATTERN_03].P0 changed (False->True)
- Parameter [PATTERN_03].P3 changed (14400->0)
- Parameter [SENSOR_02].P46 changed (3->5)
- Parameter [SURFACE_ACQUISITION].P0 changed (False->True)
- Parameter [TECHNICAL].P19 changed (550->600)
- Parameter [SECURITY].P0 changed (3->2)
- Parameter [ALARM].P9 changed (350->300)
- Parameter [END_OF_LIFE].P2 changed (900->3600)

The dialog box includes an 'OK' button at the bottom.



PROVOR CTS5

Merci !

